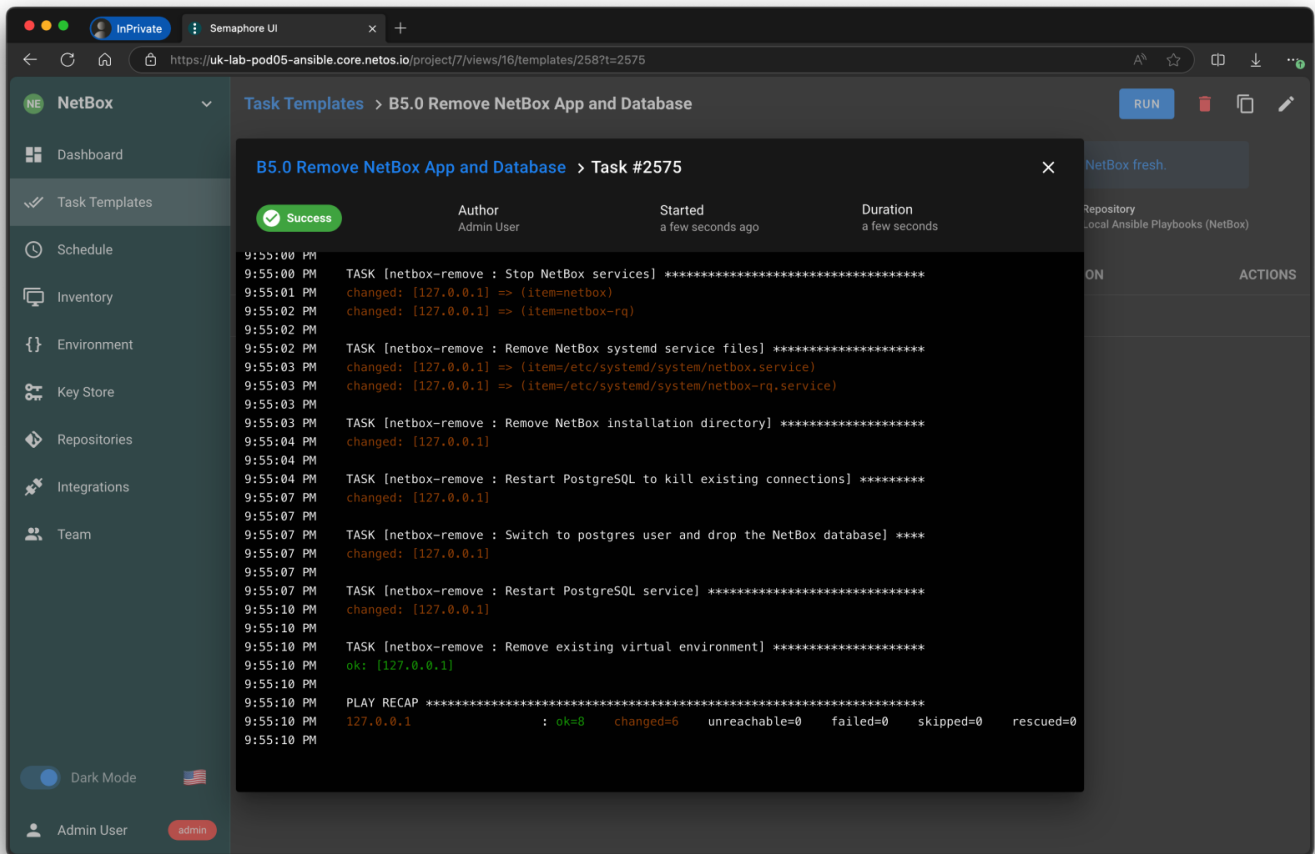


Remove NetBox

Introduction

In a test or lab environment it is useful to be able to quickly wipe NetBox so you can [re-install](#) and [restore](#).



This process will drop the NetBox database from PostgreSQL and delete the `/opt/netbox` folder. It's probably not a good idea to run this on production system. In fact, delete the template on production systems!

Revision #7

Created 2024-09-22 11:57:41 UTC by Richard Foster

Updated 2025-08-01 10:31:47 UTC by Richard Foster