

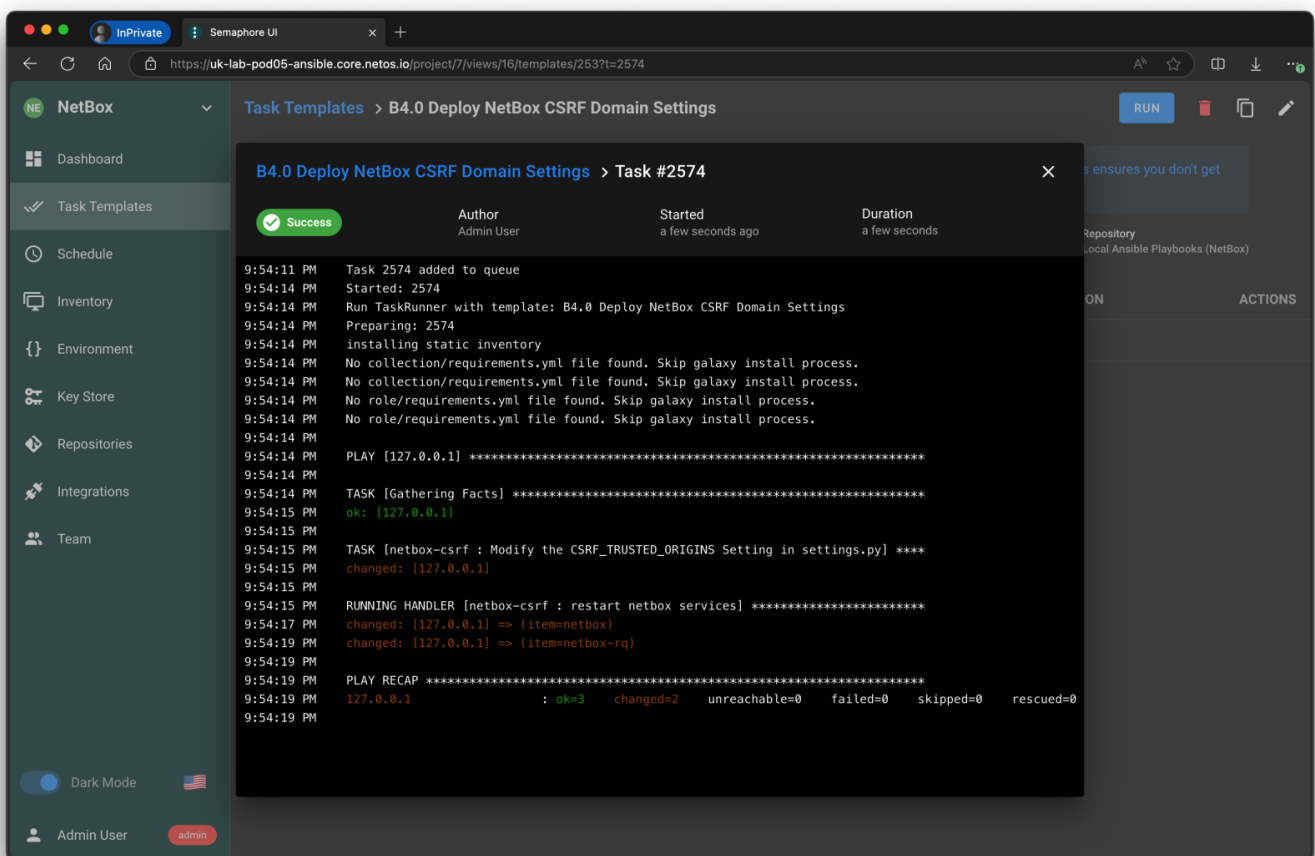
NetBox CSRF Settings

Introduction

This playbook `netbox-csrf` will add your domains in the following format to the NetBox `settings.py` file based on the `DOMAIN` variable in Semaphore.

- `http://*.yourdomain.com`
- `https://*.yourdomain.com`
- `http://yourdomain.com`
- `https://yourdomain.com`

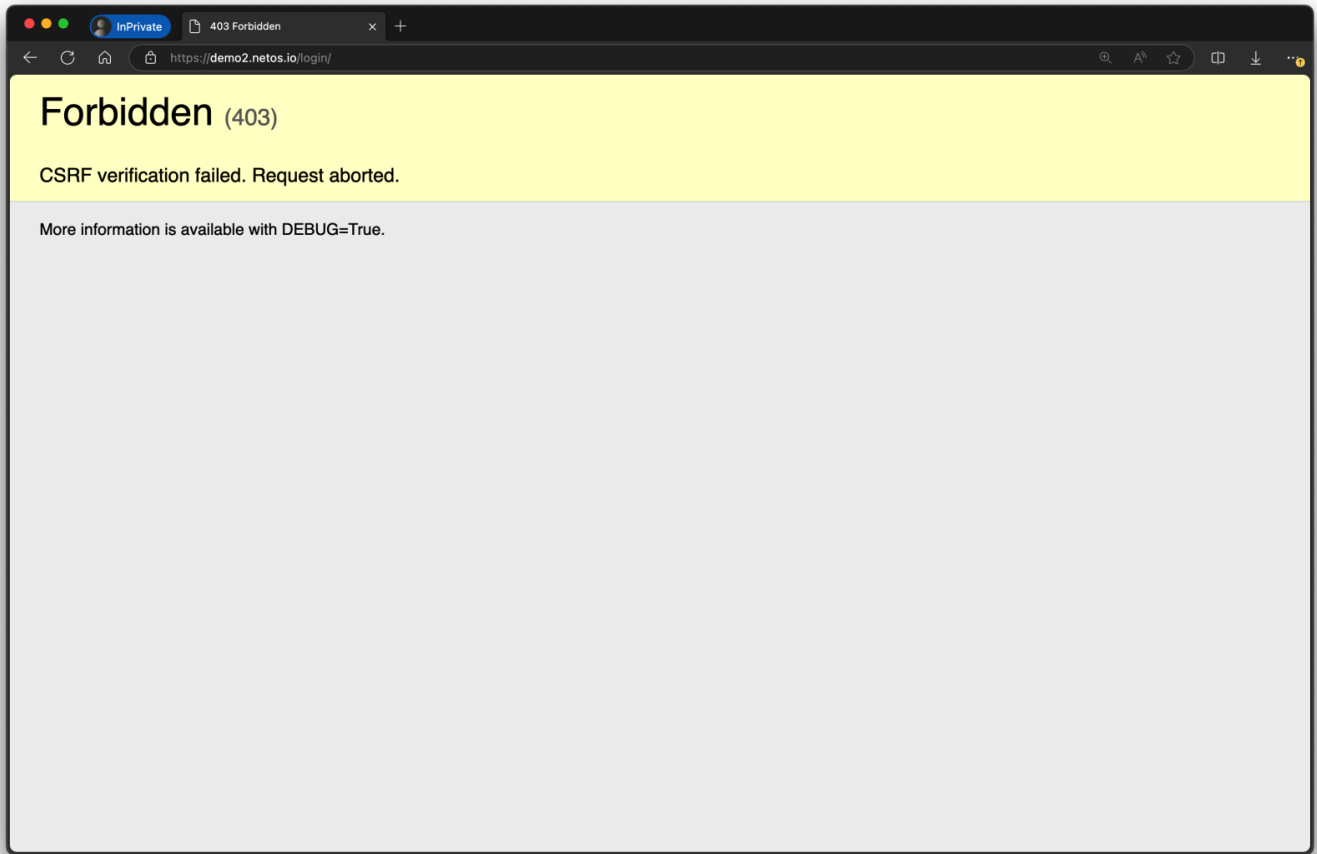
When you run the playbook, it will look like this:



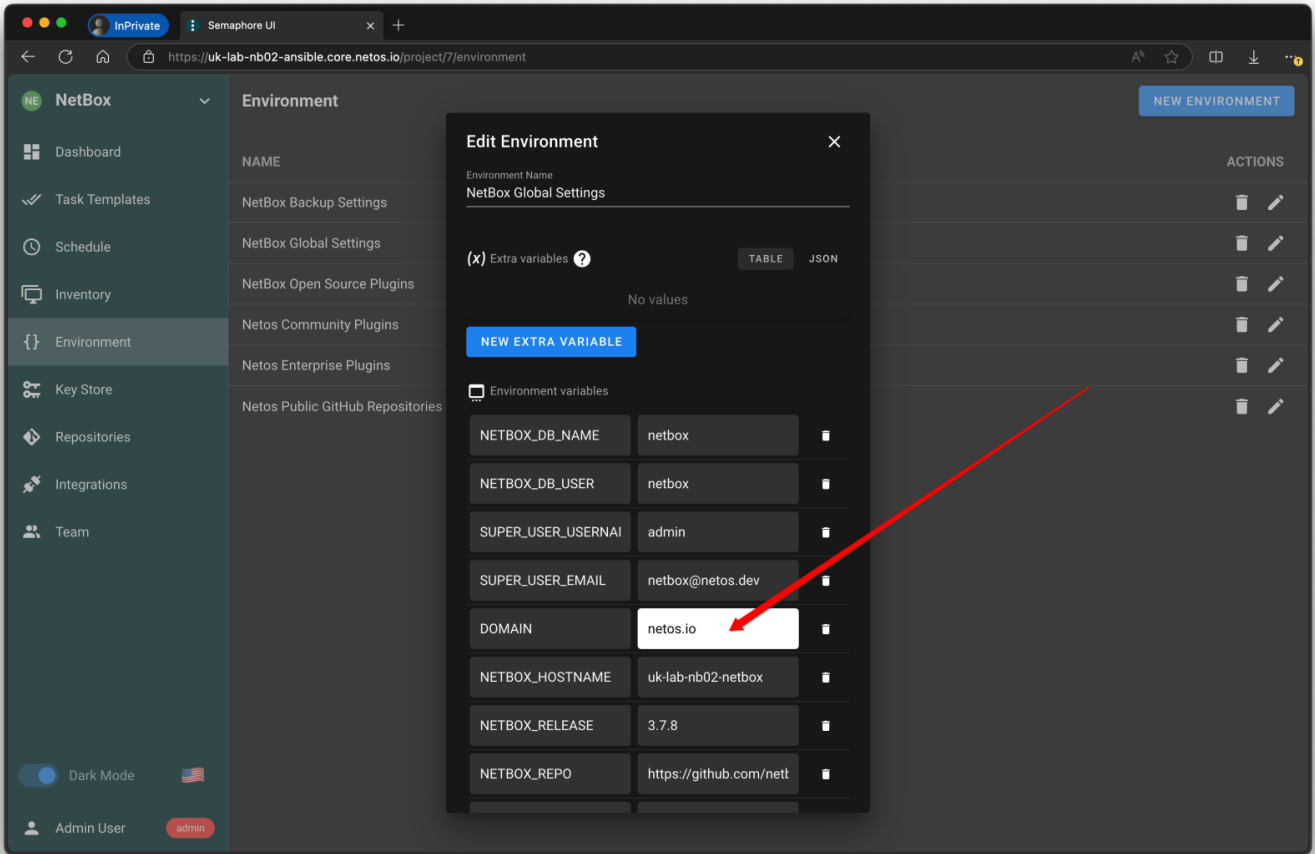
Use Case

If your server name is `uk-lab-nb01.core.netos.io`, and you configured a DNS CNAME to give it a more friendly name like `demo2.netos.io` via a reverse proxy, then you would see this error and

won't be able to login:



To fix this, change the domain to in the NetBox Global Settings:



Which will create a `settings.py` file entry like this and fix the error:

```
CSRF_TRUSTED_ORIGINS = getattr(configuration, 'CSRF_TRUSTED_ORIGINS', ['http://netos.io',  
'https://netos.io', 'http://*.netos.io', 'https://*.netos.io'])
```

Revision #4

Created 2024-09-22 20:53:46 UTC by Richard Foster

Updated 2024-10-09 14:01:31 UTC by Richard Foster