

Create NetBox API Token for Airflow

Introduction

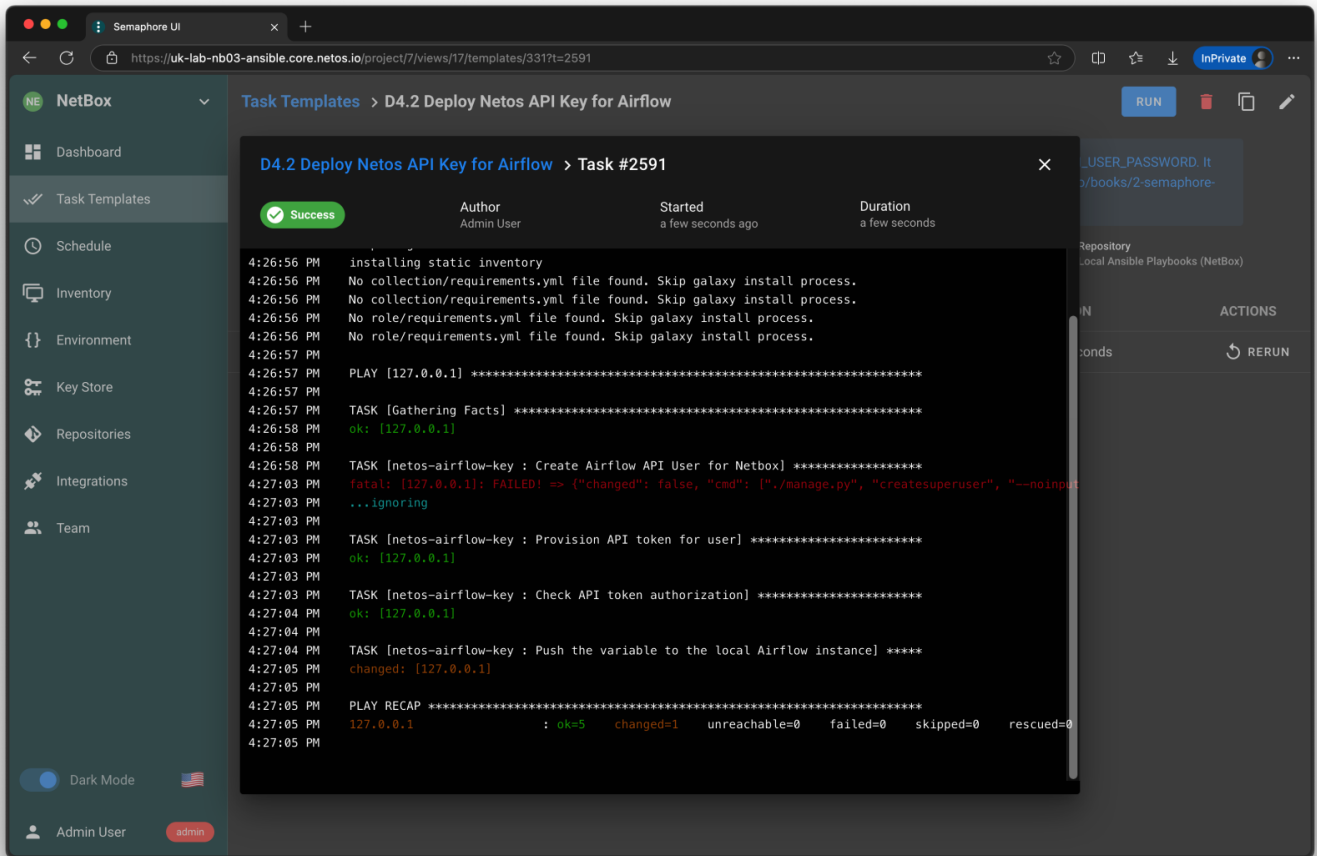
This task will provision an API key in NetBox to allow Netos Pod (Airflow) to pull and push data into NetBox. The playbook will perform the following steps:

1. Create a NetBox user called `airflow_api` with a `superuser` role.
2. Generate an API key for the `airflow_api` user (meaning that any updates from Airflow are clearly attributed to Airflow, i.e. Netos Pod).
3. Configure the `NETBOX_API_KEY` variable in Airflow.

This solution assumes that Airflow is running on the local server. For remotely connected **NetBox <> Netos Pod** configurations, please set the API manually in Airflow.

The Playbook

The "Create API User" task failed because the user exists. In this case it will refresh the token used by Airflow.



Airflow

The NetBox API key is created. If the key is wrong, the Global Orchestration DAG will not start and will show an authentication error in the logs.

The screenshot shows the Airflow web interface at the URL <https://uk-lab-nb03-airflow.core.netos.io/variable/list/>. The 'Admin' menu is open, and 'Variables' is highlighted. The table below lists various configuration variables.

Variable Name	Value	Boolean
ANSIBLE_SERVER_IP_ADDRESS	localhost	False
ANSIBLE_SERVER_SSH_KEY	/opt/airflow/dags	False
ANSIBLE_SERVER_USER	svc_ansible	False
API_DEBUG	enabled	False
DEFAULT_MAX_DB_ENTRY_AGE_IN_DAYS	14	False
ELASTIC_API_BASE_URL	http://127.0.0.1:9200/	False
ELASTIC_API_KEY	*****	False
FILE_PATH_GET_JOB_OUTPUT	/opt/airflow/dags/includes/scripts/get-job-output.sh	False
FILE_PATH_SIMULATE_JOB_OUTPUT	/opt/airflow/dags/includes/scripts/simulate-job-output.sh	False
FILE_PATH_TEST_JOB_OUTPUT	/opt/airflow/dags/includes/scripts/test-job-output.sh	False
NETBOX_API_BASE_URL	http://127.0.0.1:8001/	False
NETBOX_API_KEY	*****	False
POD_AIRFLOW_NAME	uk-lab-nb03-airflow	False
POD_COMMON_DOMAIN	core.netos.io	False
POD_ELASTIC_NAME	uk-lab-nb03-elastic	False
POD_IP_AIRFLOW	127.0.0.1	False
POD_IP_ELASTIC	127.0.0.1	False
POD_IP_KIBANA	127.0.0.1	False
POD_IP_NETBOX	127.0.0.1	False
POD_KIBANA_NAME	uk-lab-nb03-kibana	False
SCROLL_PAGE_SIZE	1500	False
WORKING_DIR	/opt/airflow/dags/	False

Revision #3

Created 2024-10-01 08:31:27 UTC by Richard Foster

Updated 2024-10-09 15:37:42 UTC by Richard Foster