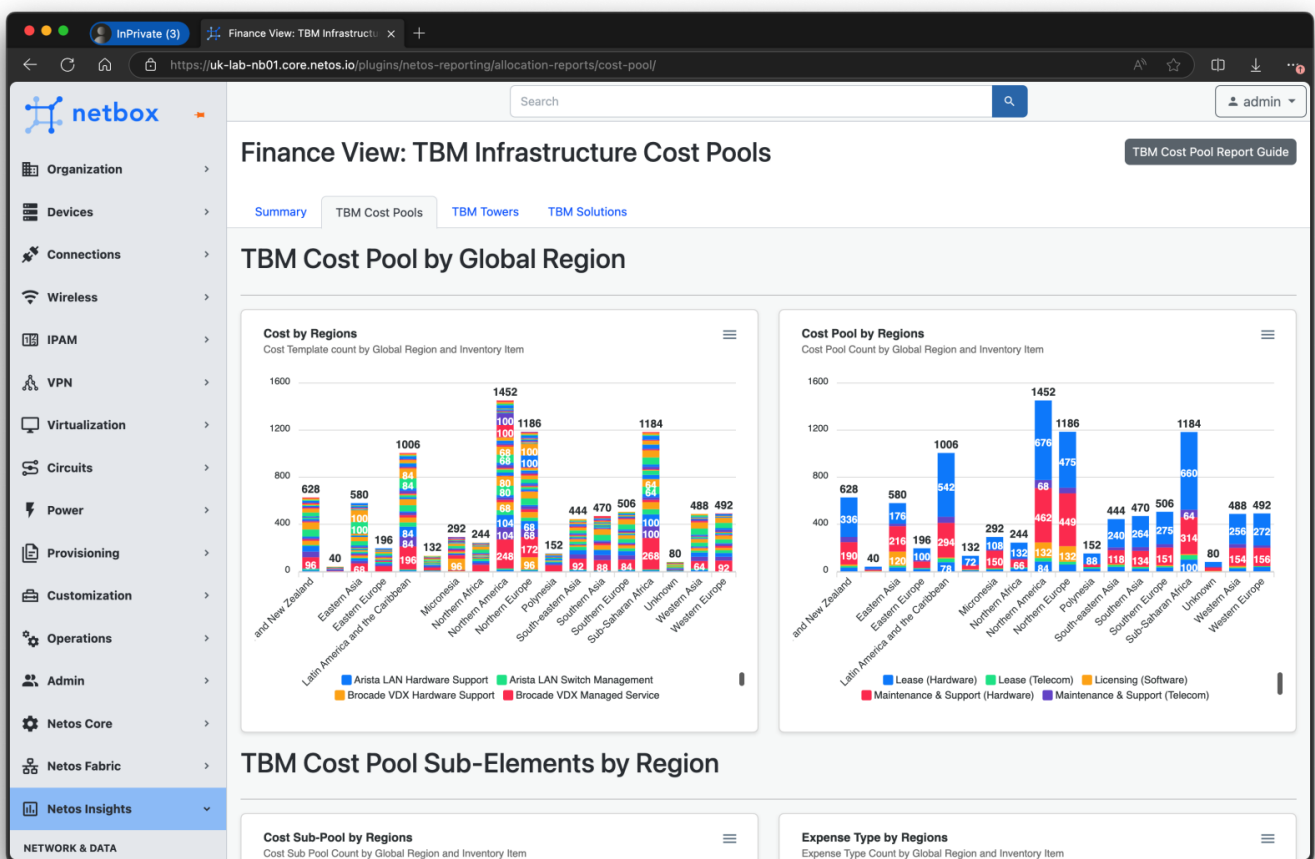


# Netos Reporting Cache Pre-Load

## Introduction

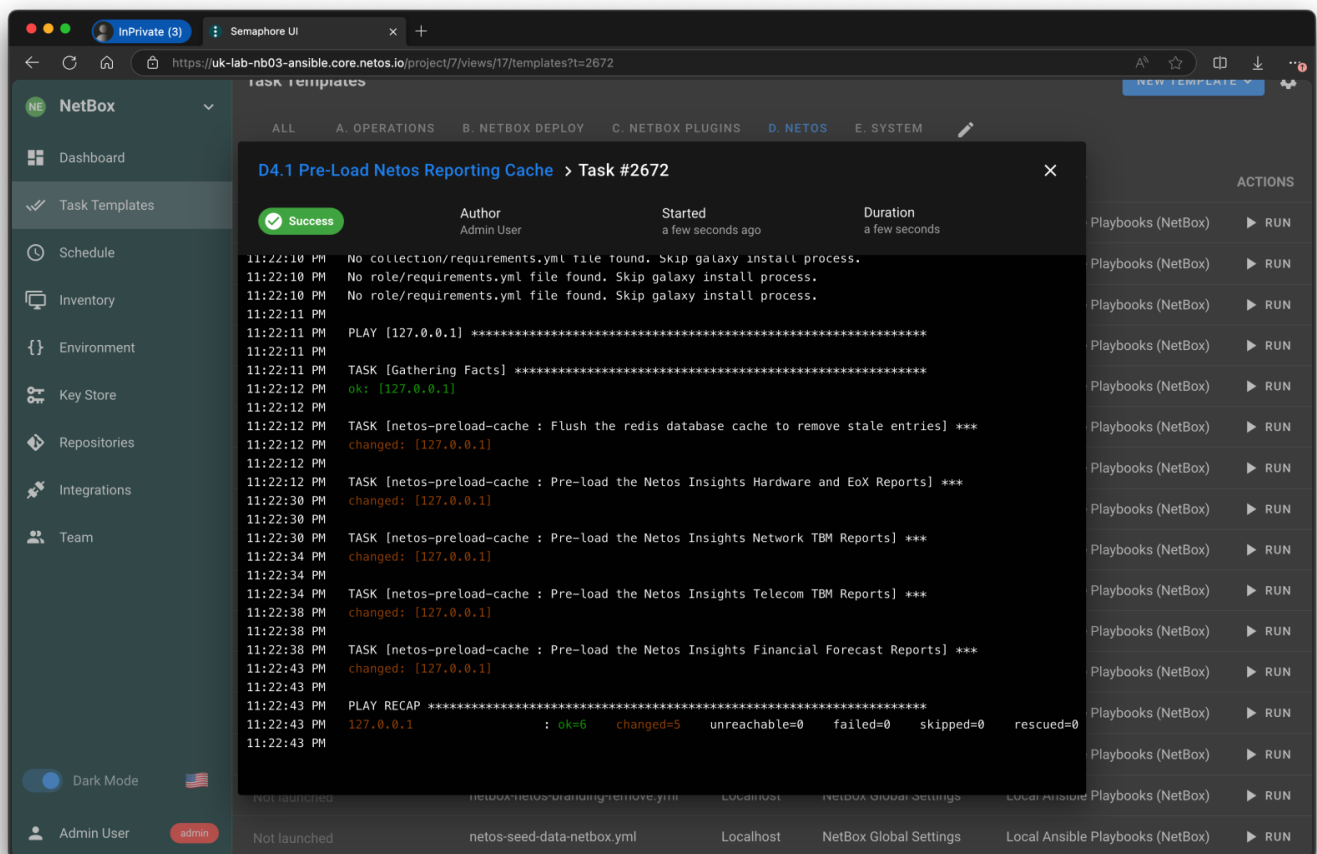
Some reports require large database queries to prepare the data, which can take 10-30 seconds to run. From a user perspective this is too slow.



Netos has developed a caching engine that pre-loads the report caches so the charts in reports, like above, loads in an acceptable time frame (usually 2-3 seconds).

## Pre-Load Job

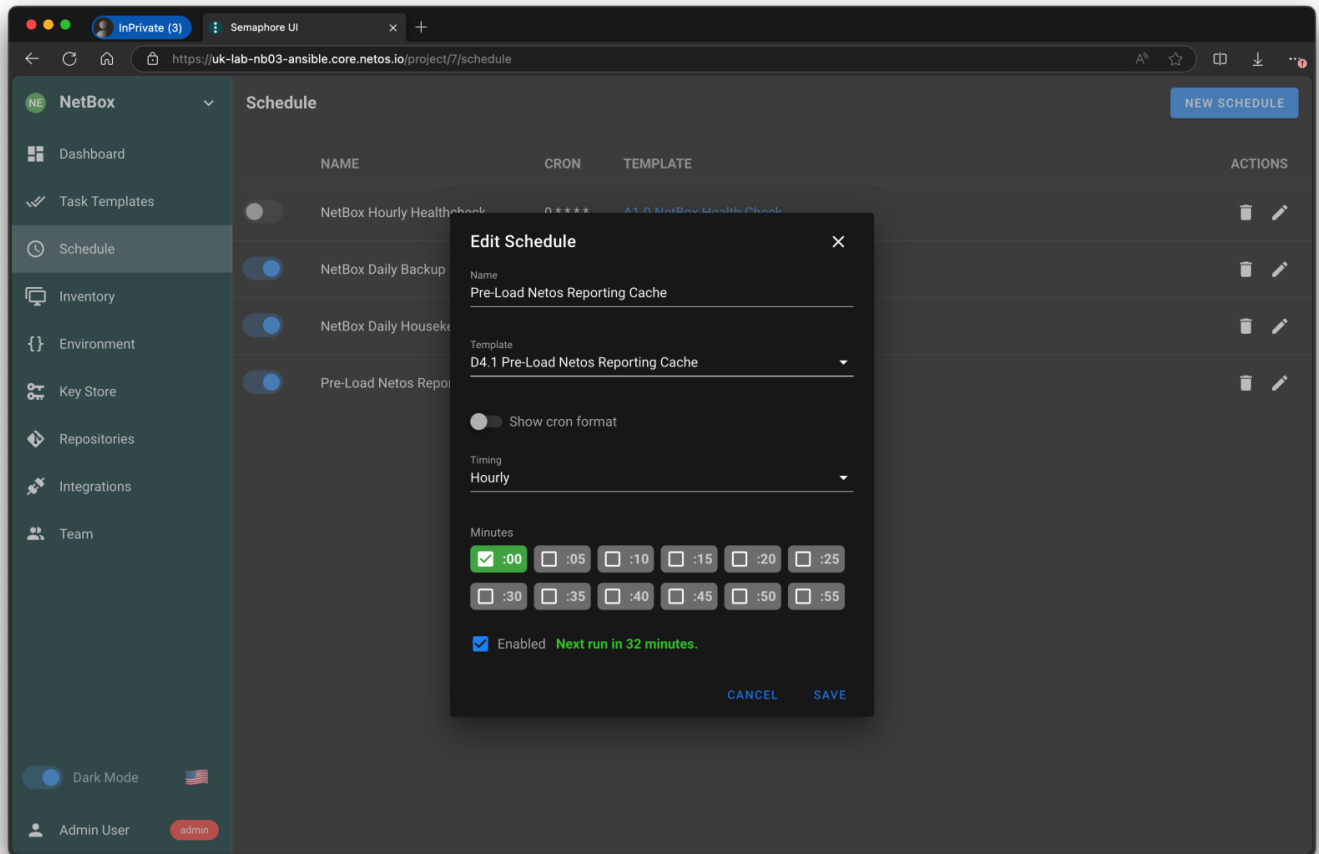
At present, there is a playbook that first flushes the current cache (stored in `redis`) and then pre-loads the cache. This task is also initiated after the Netos plugins are deployed.



The task in Semaphore will probably be depreciated in the future once <https://github.com/netbox-community/netbox/issues/16971> is resolved.

## Scheduling

Depending on the frequency of updates on the NetBox instance, the scheduler in Semaphore can be configured to automate the cache refresh. By default, this is every hour.



Revision #4

Created 24 September 2024 13:53:11 by Richard Foster

Updated 9 October 2024 14:14:06 by Richard Foster