

NetBox Health Checks & Maintenance

Introduction

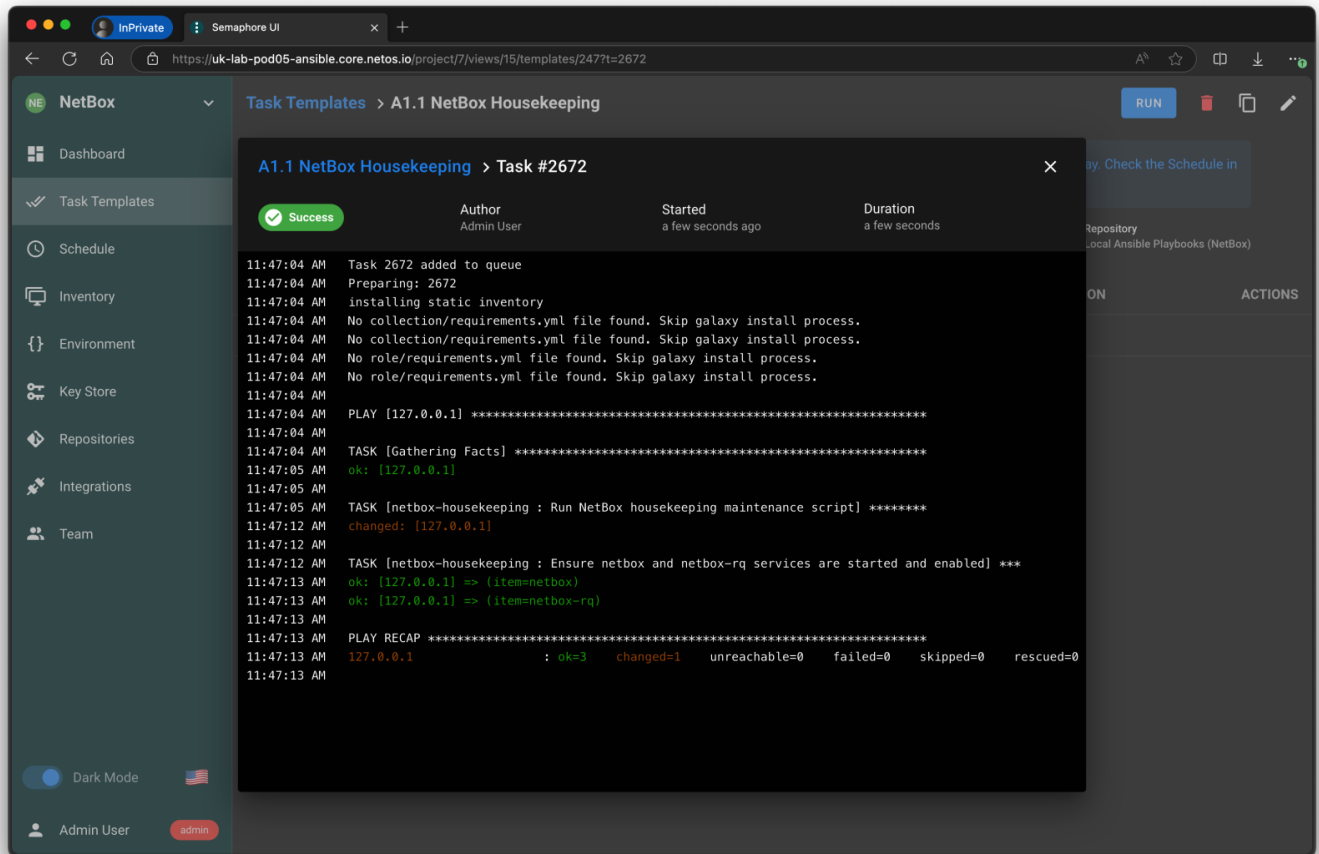
In order to keep your NetBox instance operating smoothly you can run housekeeping and maintenance scripts.

NetBox Housekeeping Script

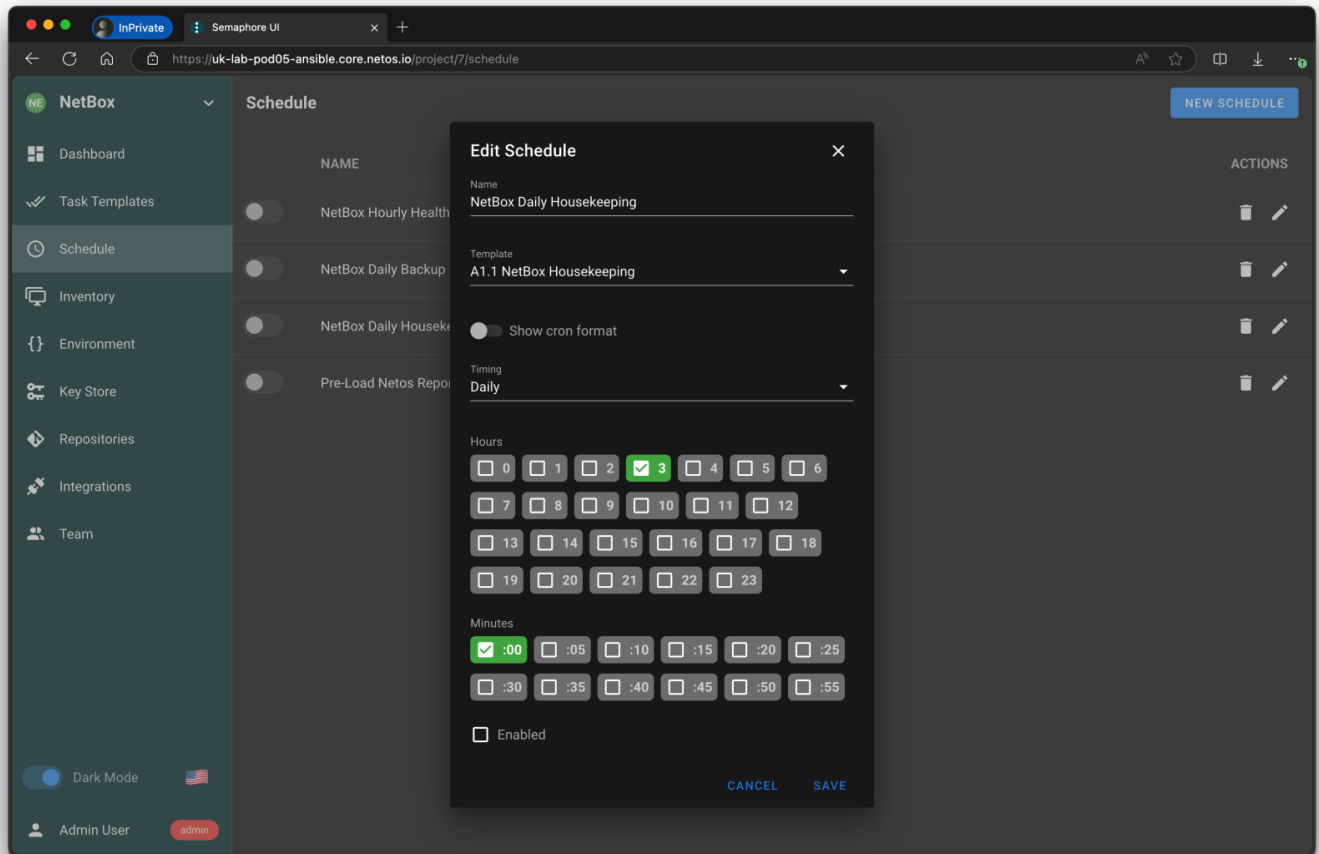
NetBox includes a `housekeeping` management command that should be run nightly. This command handles:

- Clearing expired authentication sessions from the database
- Deleting changelog records older than the configured retention time
- Deleting job result records older than the configured retention time
- Check for new NetBox releases (if `RELEASE_CHECK_URL` is set)

The official documentation is here [netbox/docs/administration/housekeeping.md](https://netbox-community.github.io/netbox/docs/administration/housekeeping.md) at develop · [netbox-community/netbox \(github.com\)](https://github.com/netbox-community/netbox)



As per the NetBox developer suggestions, you can schedule the housekeeping script to run each day by enabling the schedule job in Semaphore.

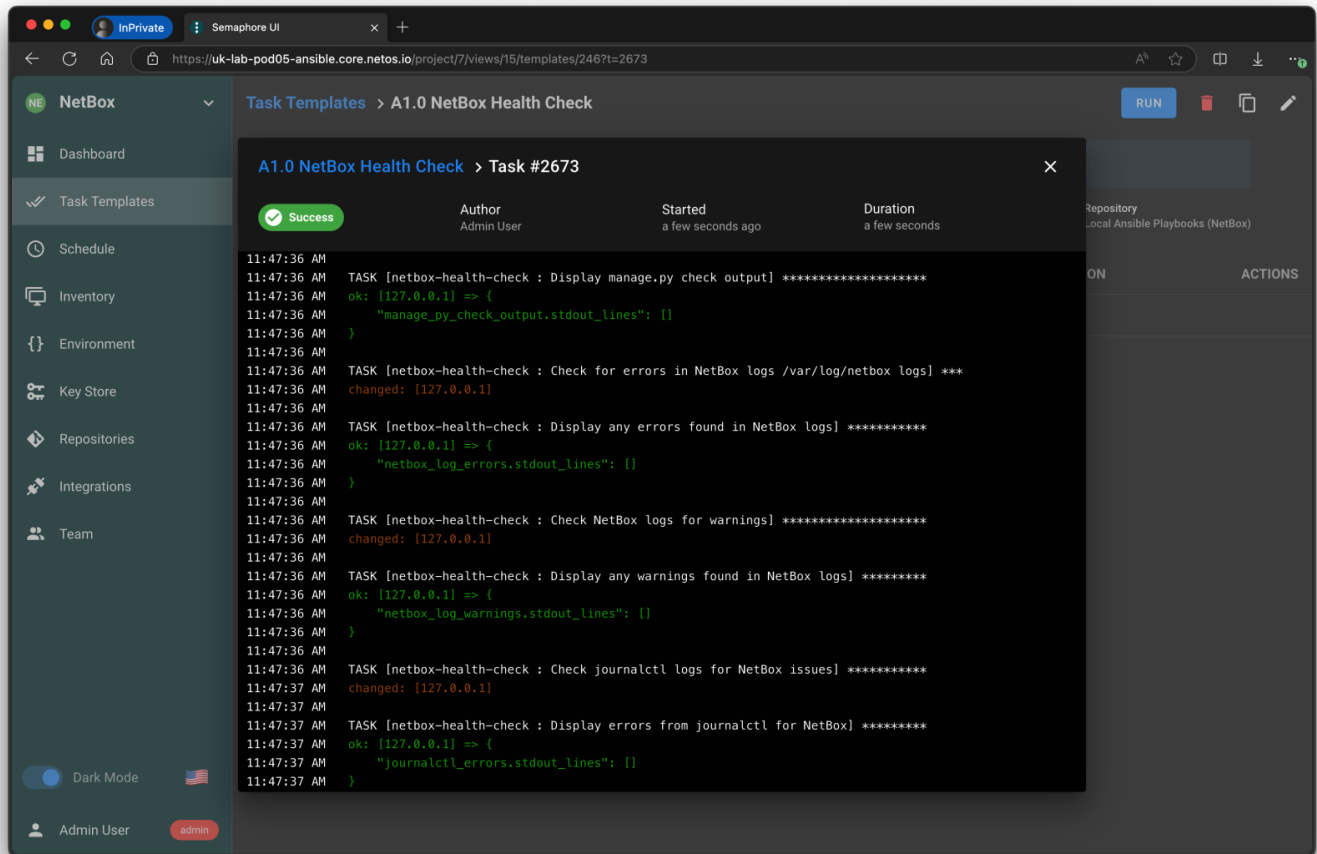


NetBox Health Check

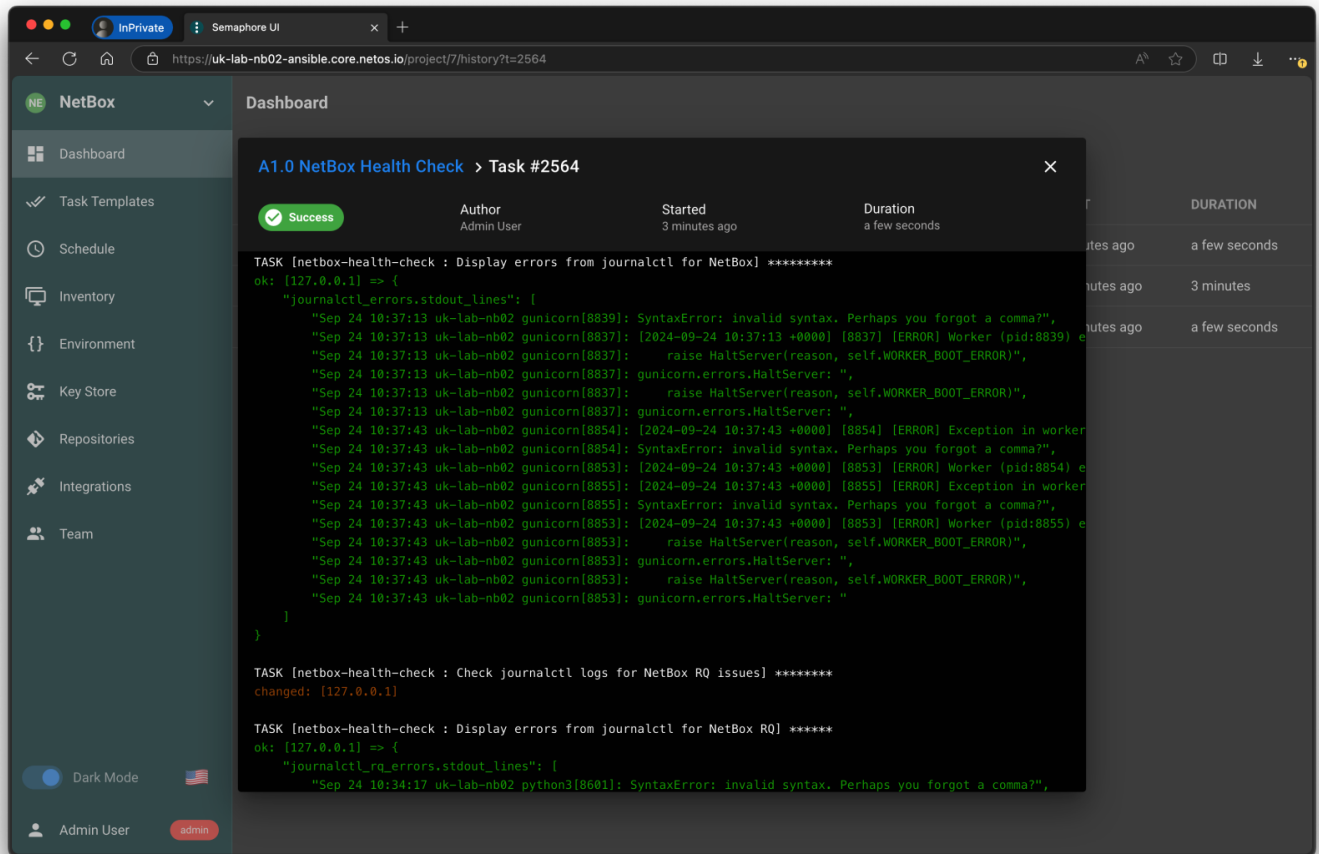
The NetBox Health Check script runs some useful commands to quickly capture the state of your NetBox instance, for example, checking processes are running, checking system logs, etc.

```
systemctl is-active netbox
systemctl is-active netbox-rq
python3 /opt/netbox/netbox/manage.py check
grep -i 'error' /var/log/nginx/netbox.error.log || true
grep -i 'warning' /var/log/nginx/netbox.error.log || true
journalctl -u netbox --since '24 hours ago' -n 250 | grep -i 'error' || true
journalctl -u netbox-rq --since '24 hours ago' -n 250 | grep -i 'error' || true
```

When you run the script, you'll see output like this:



In this scenario we can quickly see there is an error when starting NetBox, which pointed us in the right direction for troubleshooting a syntax issue in `settings.py` (using the commands detailed above).



Revision #7

Created 22 September 2024 20:58:13 by Richard Foster

Updated 9 October 2024 14:05:47 by Richard Foster