

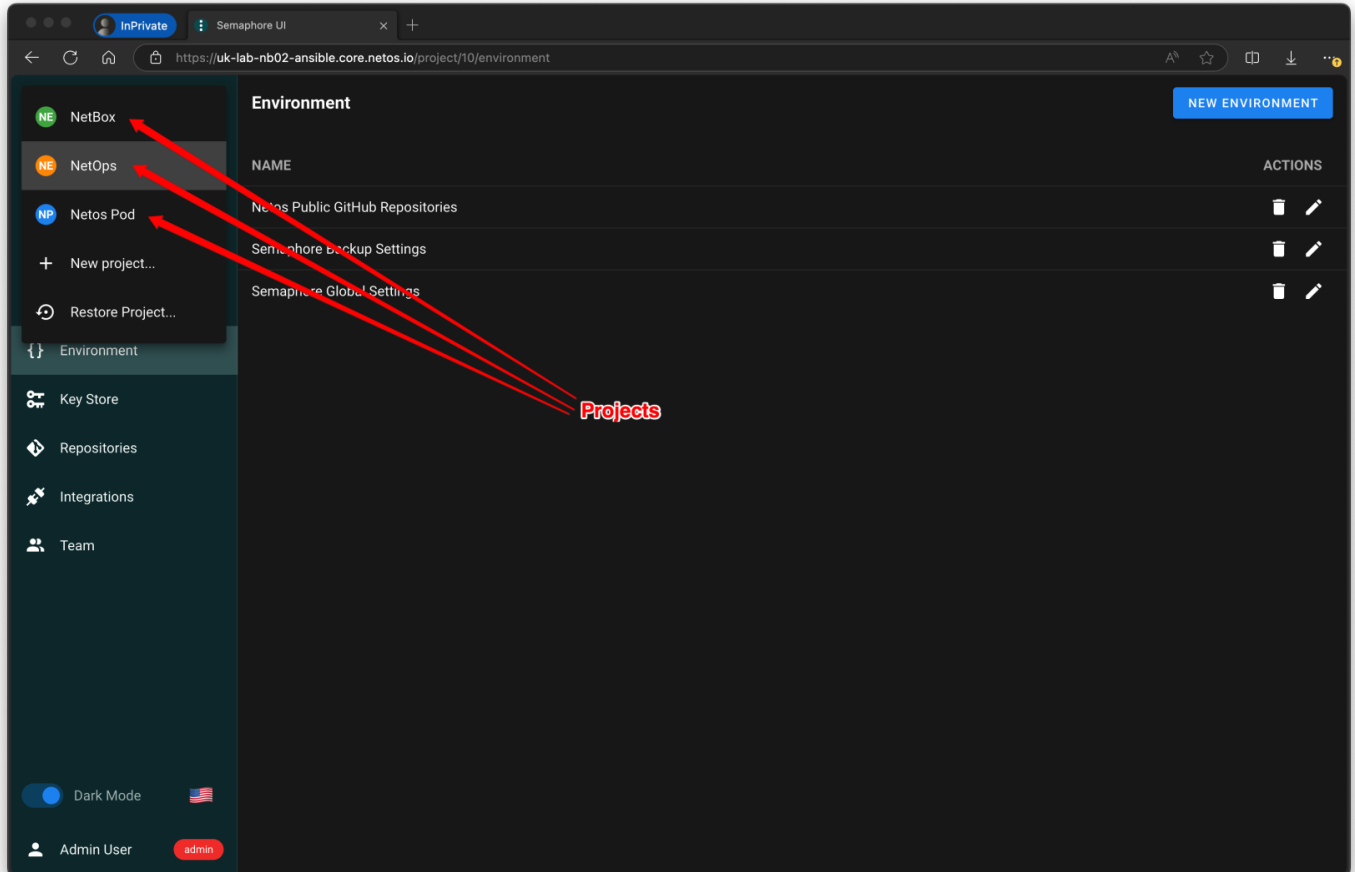
Sync Semaphore Repository Updates from Netos

Introduction

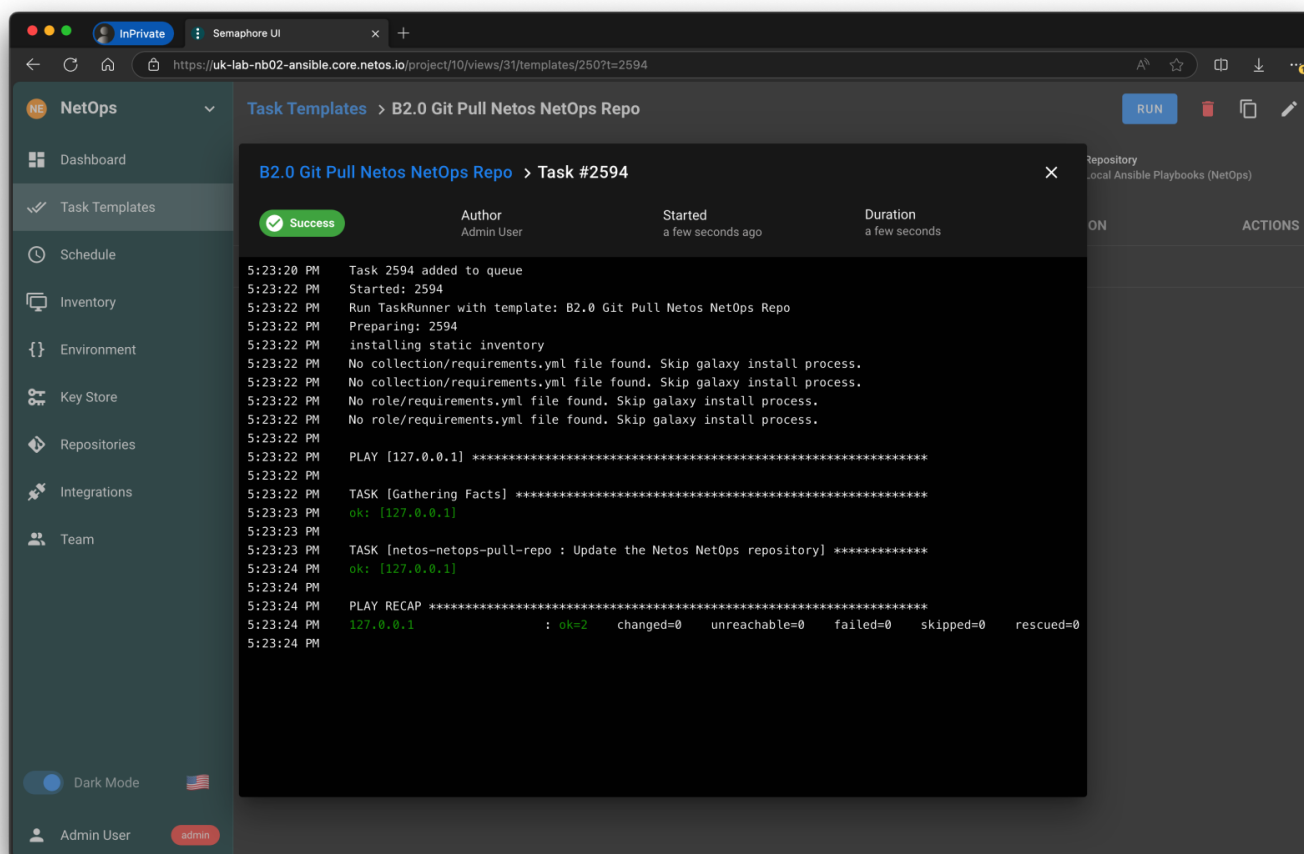
Each Semaphore project links to an associated GitHub repository, for example:

- **NetOps** = <https://github.com/netos-networks/netos-netops>
- **Netos NetBox** = <https://github.com/netos-networks/netos-netbox>

When you run playbooks from within the projects, e.g. "Deploy NetBox" it is running the playbook locally, i.e. on the local filesystem. This is by design to give you control over pulling updates from GitHub, and to ensure stability in your environment. Over time more playbooks will be added and fixes made.



From within each SYSTEM view of each Semaphore project is a task named something like "**Git Pull Project_Name Repo**". Run this to pull the latest updates for that Semaphore project.



The local directory structure on the server looks like this:

- NetOps = `/netos/netos-netops`
- NetBox = `/netos/netos-netbox`
- Netos Pod = `/netos/netos-pod`
- Netos Airflow = `/netos/netos-airflow`

```
netosadm@uk-lab-nb03: /netos$ ls -alh
total 32K
drwxr-xr-x  8 root root 4.0K Sep 24 14:30 .
drwxr-xr-x 24 root root 4.0K Aug 27 13:31 ..
drwxr-xr-x  6 root root 4.0K Sep 24 20:33 backups
drwxr-xr-x  4 root root 4.0K Sep 24 14:33 certs
drwxr-xr-x 10 root root 4.0K Sep 24 20:02 netos-netbox
drwxr-xr-x  9 root root 4.0K Sep 26 15:45 netos-netops
drwxr-xr-x  5 root root 4.0K Sep 24 14:30 netos-pod
drwxr-xr-x  4 root root 4.0K Sep 24 14:30 working-dir
netosadm@uk-lab-nb03: /netos$
```

Don't edit or make changes to the repository directories as they will be force replaced each time you pull the repo.

The repository directories are excluded from the [Semaphore backup job](#) in the NetOps project.

Revision #5

Created 22 September 2024 17:11:06 by Richard Foster

Updated 9 October 2024 13:28:32 by Richard Foster